

Corporate Product Review: G DATA



Excerpt from

Review of IT Security Suites for Corporate Users, 2009

Language: English

May 2009

Last revision date: 2009-05-27

www.av-comparatives.org



G DATA

Test Software:

AVB10



Admin Console & File Server Protection

ClientSecurity10



Client Protection

MS10GER



Mail Server Protection

Installation Procedure:

Downloading the Products:

Menu navigation provided by the manufacturer has been structured coherently and kept simple. You have no problems finding the desired product and you can download all the products with their full scope of functionality.

You can also receive updates via the Internet after registering successfully.

Using a 1.29 MB/sec. connection, the download times were as follows:

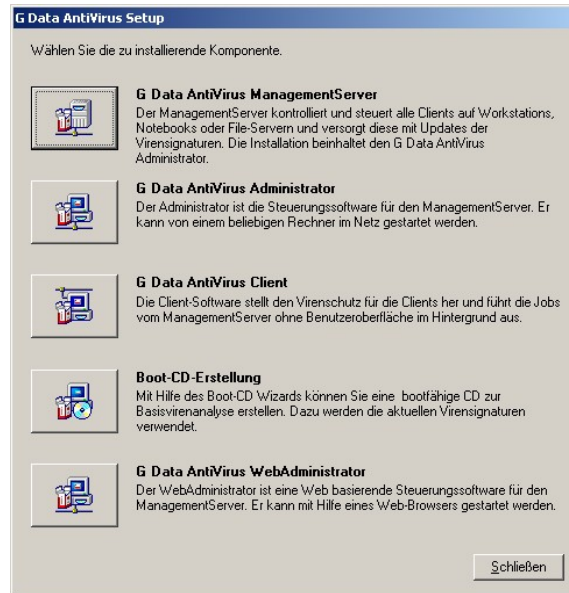
AVB10 (1.06 GB) \Rightarrow 19:20 min.

ClientSecurity10 (1.24 GB) \Rightarrow 20:20 min.

MS10GER (250 MB) \Rightarrow 03:12 min.

Installing the Products:

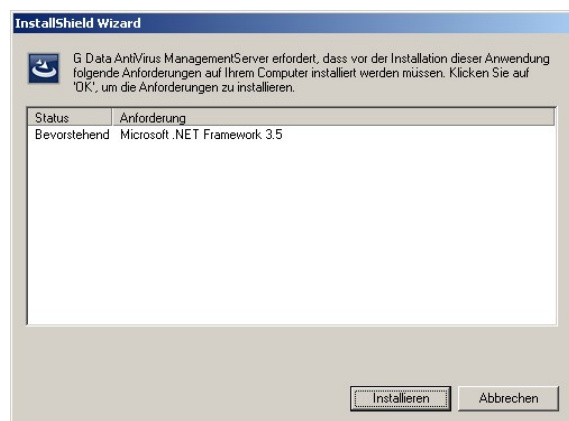
As the extremely large files seem to suggest, all products meant for the server need to be installed using an installation wizard.



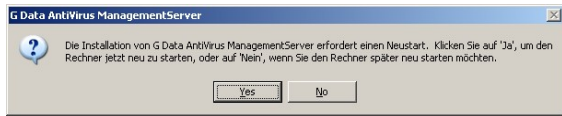
The menu navigation is exemplary and the individual modules have been provided with detailed and comprehensive clarifications.

As a result of the composition of the modules and clarifications given beside them, the sequence of steps required for the installation is also clearly evident.

We begin with the installation of the Management Server.



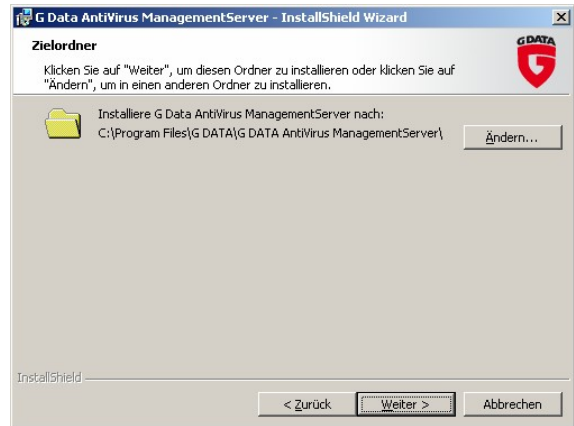
The Management Server requires the latest version of Microsoft .NET. This is supplied along with the installation package and, hence, you do not need to download it manually.



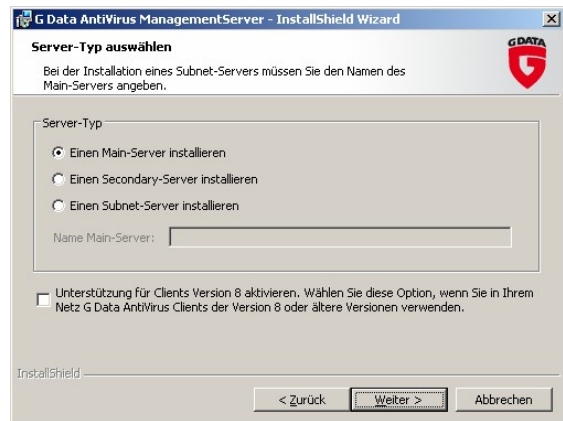
Administrators are not very pleased to see this message since the IT is active at this point of time. But the reboot is only necessary if the .net Framework was not already installed on the computer.



You expect the installation wizard to return after MS .net 3.5 has been installed successfully and the server has been re-started.



We let the default values be used for the standard query regarding the license agreement and the installation folder.

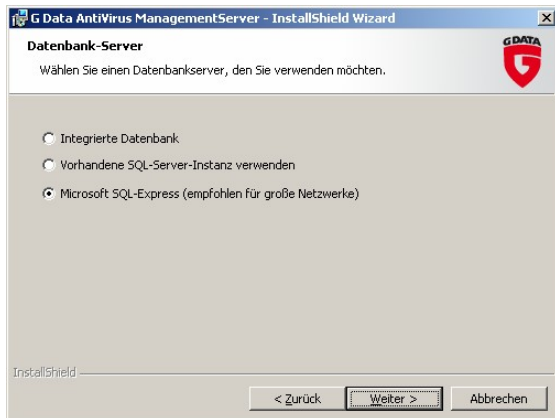


You should select the type of server in the next step. You can immediately notice here that it is no problem whatsoever for the GDATA suite to be deployed in large networks having branch offices and decentralized Servers. We select "Main Server" since it is the first installation in our network.

We select the desired database server for the suite in the next step. The message that SQL Express is recommended for large networks is somewhat misleading. This statement is applicable if there is no instance of an SQL Server in the existing network, or the existing SQL Server has enough to do with the existing databases.

However, it needs to be mentioned here that the Express variant of the MS AQL Server is naturally not comparable to the large variant in terms of performance.

This system does not provide any support for open-source databases such as MySQL.

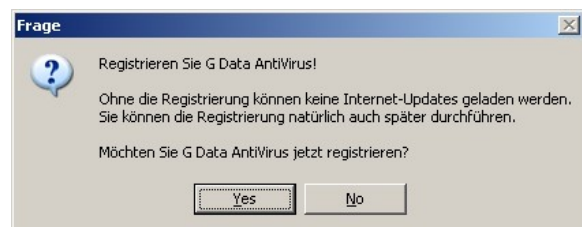
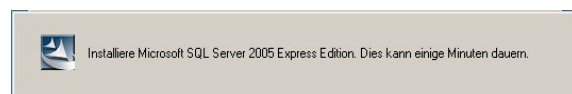
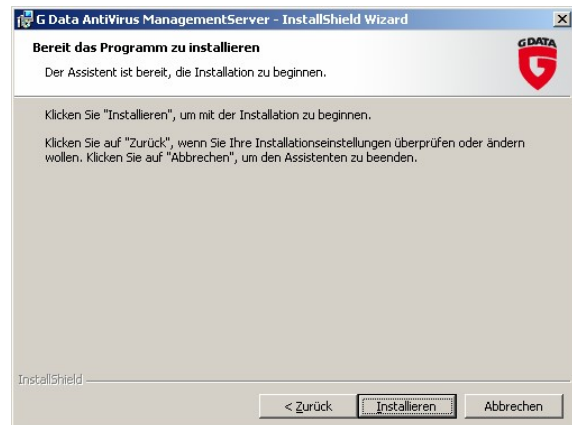


For this purpose, the powerful Installation wizard of the GDATA suite contains the MS SQL Server Express installation packages.



In the next step, you need to convey to the installation the network name with which the Management Server can be accessed.

You can kickoff the installation procedure after all the information has been collected.

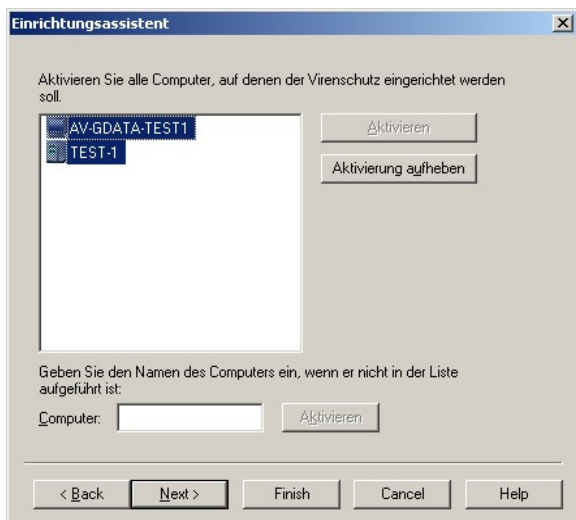
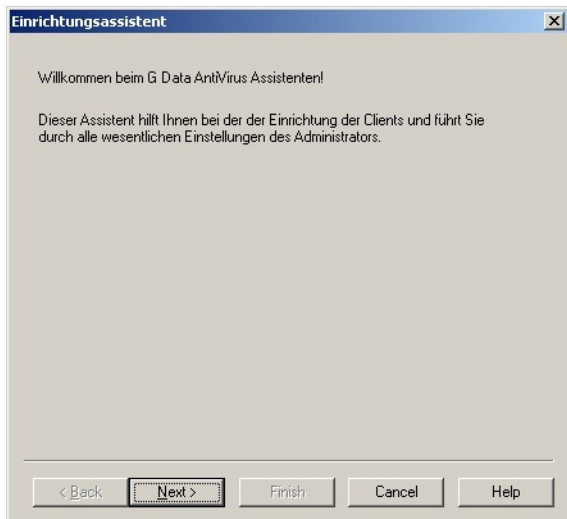


After the installation has been completed successfully, the message regarding regis-

tration is displayed once again to make the system ready to accept updates.

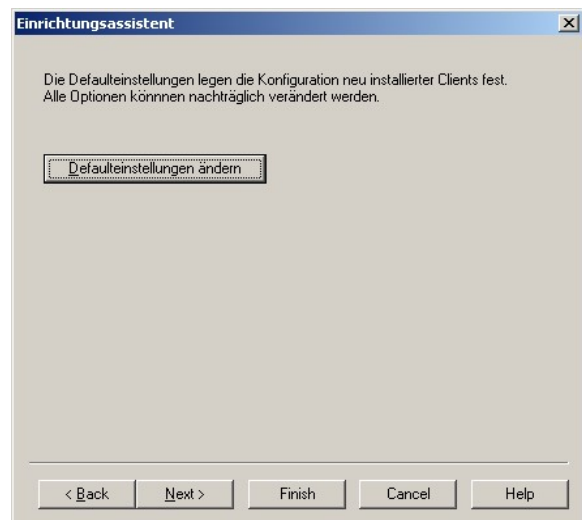
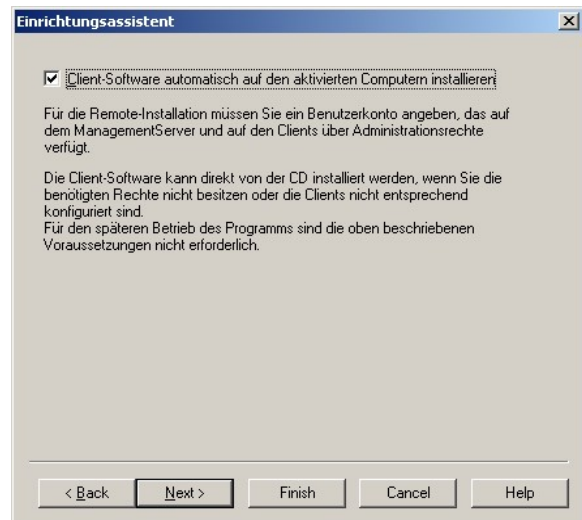


Immediately after installation has been completed, the “Setup Wizard” appears:

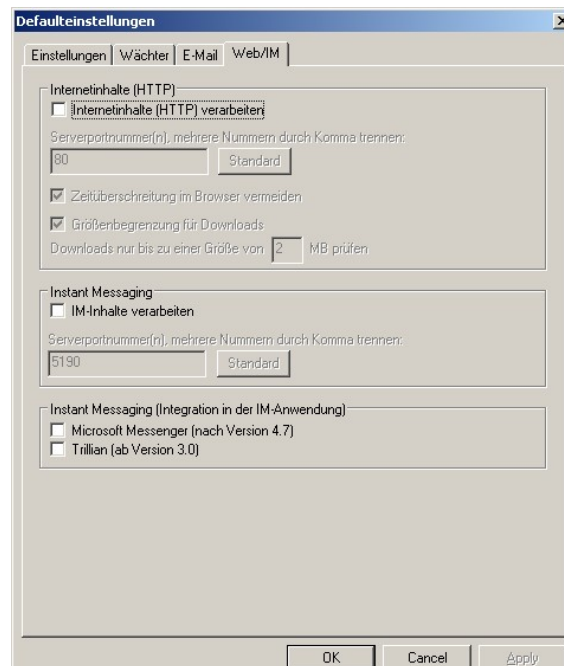
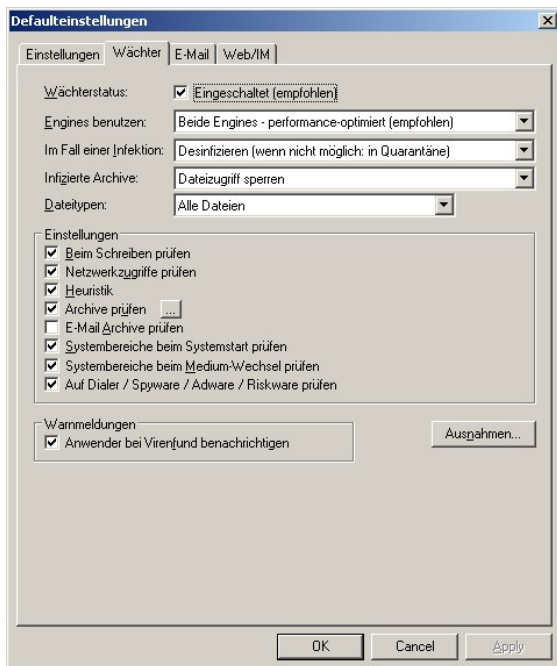
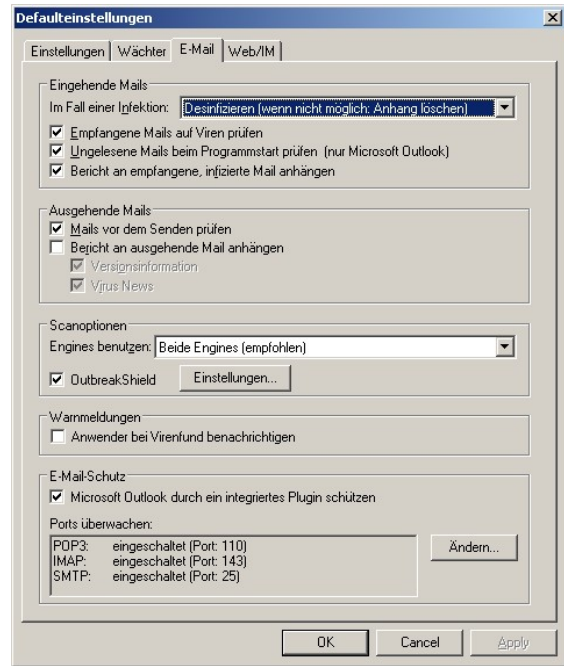
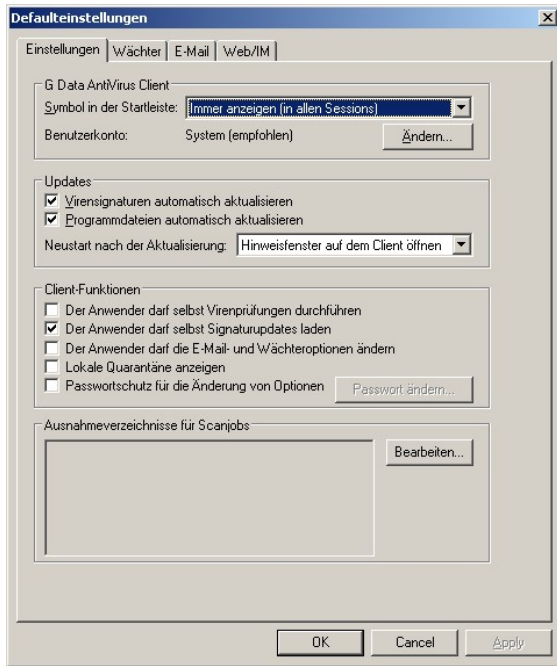


The wizard displays those computers, which do not yet have any GDATA products installed, without the need for anything much by way of configuration and based on the network environment and the AD.

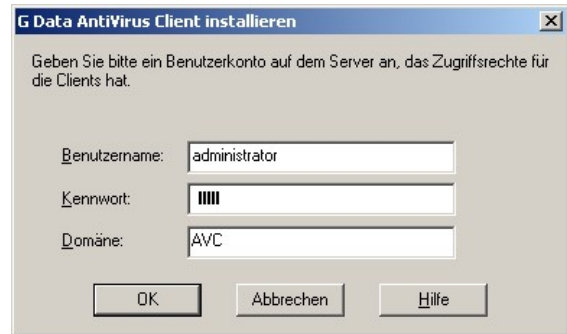
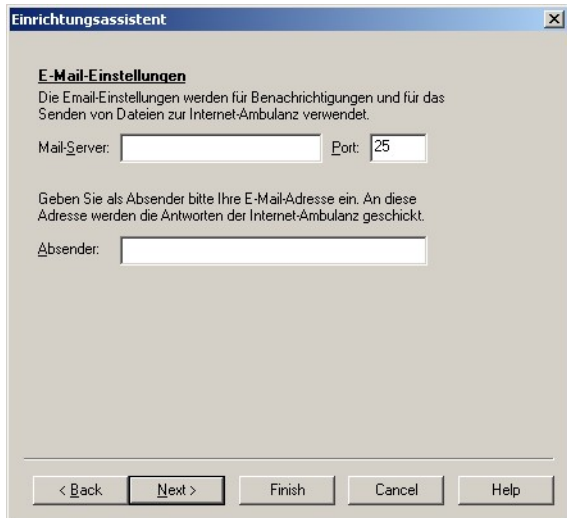
The description of various menus is exemplary and you can dispense with the manual completely as an aid for the installation procedure.



You can configure the default settings with the help of the wizard.

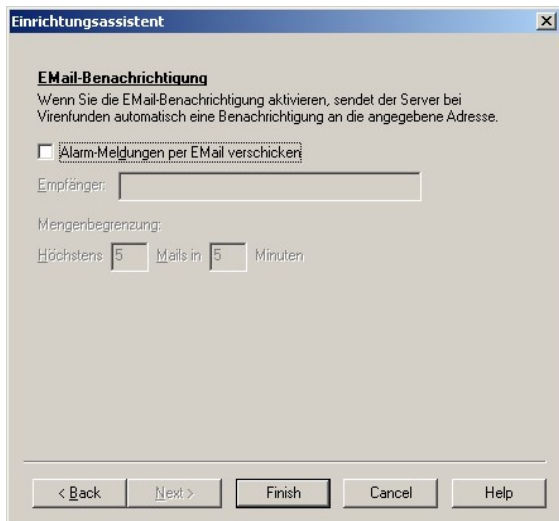
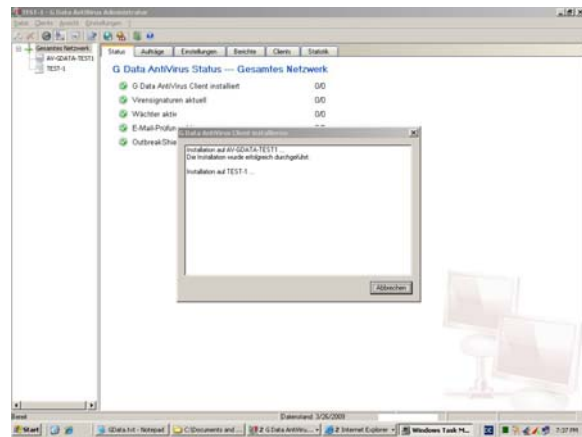


The wizard does not leave anything to be desired, and despite this, it is structured in a simple manner, and yet incorporates all features that are required.



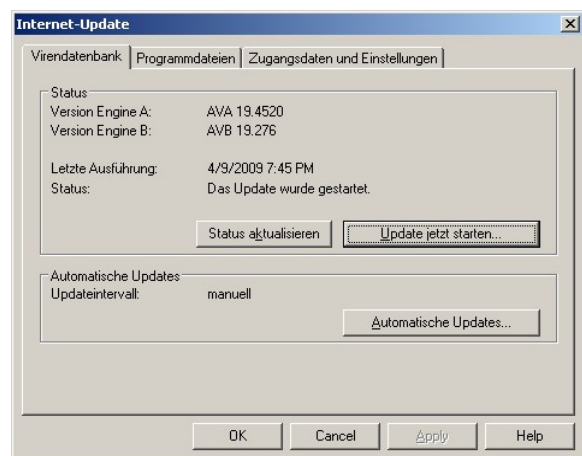
Here, you should define the account with which the Clients would be installed and configured. The system provides MS AD support.

In the next step, you can specify the e-mail address to which messages should be sent. This address is used for comparison with the GDATA Internet Ambulance.



After the Setup wizard has completed its task, you can start with the installation of the software on the Clients and Servers selected earlier.

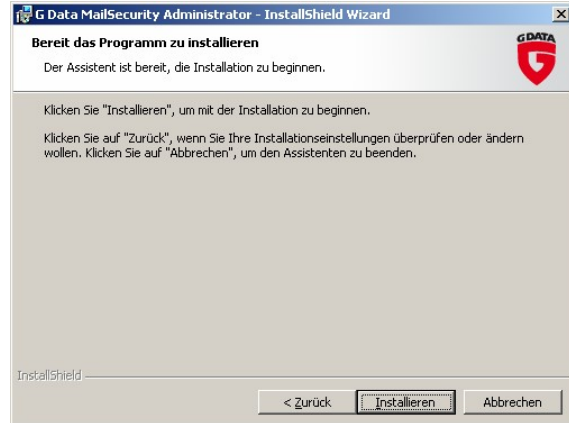
You can also specify a separate address for the alarm messages. You can see here that the GDATA suite feels very comfortable even in complex security environments and gives the administrator the option to configure his department optimally for the security issues and concerns.



The settings of the update method too have been designed coherently and kept simple.

Navigation within the Management Console leaves nothing to be desired and is self-explanatory. It has been kept lean and simple and yet includes everything that you require.

In the next step, you install the Mail Server protection.



After completing the standard installation with the usual queries regarding the license agreement and the destination folder, a login window appears at the Mail Admin console.



You also need an SQL entity here for the statistical evaluation of the mail traffic. You can, of course, use the SQL Express server that has been installed previously.

GMail also detects immediately that a GDATA Antivirus Client has already been installed on the Server and then also uses these signatures.

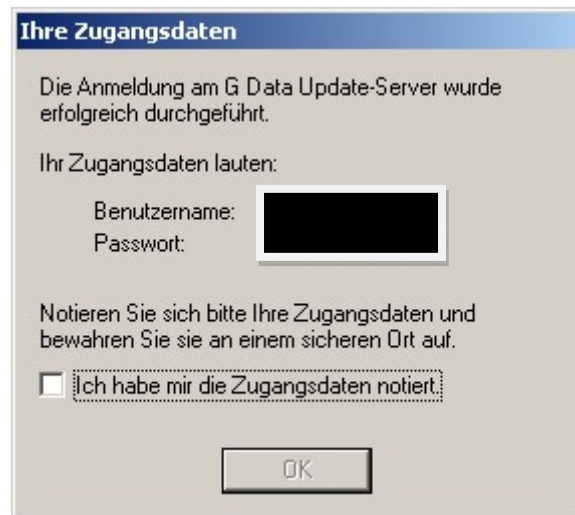


After logging in to the Administrator console of the GMail Security Scanner, you are presented immediately with an overview of the processes running currently and other system information:



Here too, the graphical user interface leaves nothing to be desired as far as user-friendliness is concerned, and, at the same time, all required settings can be configured.

Finally, you would get a message regarding the successful registration on the GDATA update server:



Summary

Manufacturer's website (www.gdata.de):

The website has been designed elegantly and you can find your way around it easily. The site complies with the prevalent Internet standards. The navigation has been structured coherently and kept simple.

There is an on-line shop, but this merely refers you to the nearest reseller.

This system has its own security zone (threads), in which you can get an overview of the threats from the Internet and a tip on the product that provides protection against the same. The zone provides detailed information regarding the threats and a glossary simplifies the task of users who are not well versed in the subject.

The Installation Procedure:

After downloading the unbelievably large size of installation files, 2.58 GB the Admin expects the very elegant and sophisticated installation wizard.

The products have been assigned relevant and appropriate names with which you need to start.

In the first step, you are required to update the server to Microsoft .NET version 3.5. This update is included in the installation package of the suite. Unfortunately, this update requires that you restart the server.

After the restart, the installation wizard starts before establishing the network connections. This is where you understand

why the installation file for the suite is so huge.

The installation wizard has been designed perfectly and leaves nothing to be desired. The system can detect immediately whether you would like to install a Slave Server or a Main Server. This is where you realize that the suite is also suitable for large networks having branch offices.

Good database support is also available. You can choose between an integrated database engine, a new SQL Server entity or the MS SQL desktop engine. This setting is also the default setting. The tip that the SQL desktop engine is recommended for large networks is in our opinion superfluous, since a dedicated SQL server performs definitively many times better than the desktop engine, with the only exception being that the network traffic is naturally reduced.

After the installation is completed, the wizard guides the Admin through the registration process, without which no updates would be possible.

First, the Setup wizard welcomes the user, with this welcome window blending very elegantly into that of the installation wizard. Even here, we do not find any setting options that are not included.

The entire installation wizard, right up to the completion stage, is designed very coherently and with a simple structure, and you can configure the most important settings in a matter of minutes.

In our opinion, the installation wizard and the wizard of the GDATA suite are the best available in all the products tested by us.

Support for Microsoft Active Directory is provided and the default settings used for all modules practically do not need to be changed at all.

The Administrator Console:

The console has been designed extremely well. You can find your way very quickly as a result of the arrangement similar to that of the MMC and the tabs on the right side guide the user quickly to the desired functions.

The console has been designed in a very appealing and elegant manner, which makes working with it a very comfortable experience.

The status page of the console could have been designed to be more detailed and contain more information.

However, as in the case of KASPERSKY and SYMANTEC, there is no cause for complaints in connection with the functionality and the organization of the Clients. We also found the console to be very appealing and attractive.

Application Areas:

The entire GDATA suite can be used without any qualms in all sizes of networks. You can also operate all branch offices well by conserving network resources owing to the master-slave configuration.

You are also equipped for large networks by means of the database support.

AV Clients:

The message pop-ups are not an eye-sore. After installing the product successfully and starting it, the system executes all the steps necessary automatically.

The user can configure only the most important settings with the least of user privileges.

The Client has also been designed elegantly and appealingly and you can find your way around it almost immediately.

Conclusion:

The GDATA products are extremely mature and well developed. This is true, starting right from the installation wizard, which practically never lets the Admin scratch his head, right up to the comprehensive configuration options, which cover all requirements even in more complex environments.

The only issue about which you can complain is that of missing real-time logging functions, which enable an Admin to know exactly about the update and configuration process of his Clients.

It would have been nice even to have an overview page depicting the status and condition of the Clients.

Apart from these considerations, we can recommend the GDATA suite strongly to any Admin. The product is also reasonably priced.

Pros and Cons:

- + Very good installation wizard having excellent user navigation
- + MS Active Directory Support
- + Client installation is fast
- + Admin console is designed clearly and coherently
- + Remote installation is very easy
- + Manual is not necessary
- + Also suitable for larger rollouts
- + Good database support
- + Good quality of the manufacturer’s web-site
- No summary page in the MMC
- No proper real-time logging feature

Application Areas:

Small Networks (0-50 Users)	Medium Networks (50-500 Users)	Large Networks (500-? Users)
★ ★ ★ ★ ★	★ ★ ★ ★ ★	★ ★ ★ ★ ★

Installation Wizard	★ ★ ★ ★ ★
User Navigation	★ ★ ★ ★
Administrator console	★ ★ ★ ★ ★
Default Values	★ ★ ★
MS Active Directory Support	★ ★ ★ ★
Database Support	★ ★ ★ ★
Remote Installation	★ ★ ★ ★
Website	★ ★ ★ ★
Manual	★ ★ ★ ★

Copyright and Disclaimer

This publication is Copyright © 2009 by AV-Comparatives e.V. ®. Any use of the results, etc., in whole or in part, is ONLY permitted with the explicit written approval of the Management Board of AV-Comparatives e.V., prior to their publication. AV-Comparatives e.V. and its appointed representatives carrying out the tests cannot be held liable for any damage or loss, which might occur, as a result of, or in connection with, the use of the information provided in this document. We have taken every possible care to ensure the correctness of the basic data, but no liability can be taken for the correctness of the test results by any representative of AV-Comparatives e.V. We do not give any guarantee for the correctness, completeness, or suitability for a specific purpose of any of the information /content provided at any given time. No one else involved in creating, producing or delivering test results shall be liable for any indirect, special or consequential damage, or loss of profits, arising out of, or related to, the use or inability to use, the services provided by the website, test documents or any related data. AV-Comparatives e.V. is a registered Austrian non-profit organization.

Please visit our website for more information about AV-Comparatives and the testing methodologies deployed.

AV-Comparatives e.V. (May 2009)

To get the full review including also other corporate products, please visit
<http://www.av-comparatives.org/comparativesreviews/corporate-reviews>